

Test Report

No: 10491966(1) A2

Date: 31-Mar-2020

Page 1 of 7

Life3 Pte Ltd
17 Kaki Bukit Place Singapore 416195

The following sample(s) was/were submitted and identified by/on behalf of the client as:

Sample Name : Quantum-Ion

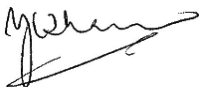
Sample Receiving Date : 24-Mar-2020
Testing Period : 24-Mar-2020 to 31-Mar-2020

Test Requested : In accordance with the RoHS Directive (EU) 2015/863 amending Annex II to Directive 2011/65/EU.

Test Result(s) : Please refer to next page(s).

Conclusion : Based on the performed tests on submitted sample(s), the results **comply with** the RoHS Directive (EU) 2015/863 amending Annex II to Directive 2011/65/EU.

Signed for and on behalf of
SGS Testing & Control Services Singapore Pte Ltd



Y.C. Tham
Laboratory Manager

Test Location: 3 Toh Tuck Link, #01-02, Singapore 596228

This document is issued by the Company under its General Conditions of Service accessible at www.sgs.com/terms_and_conditions.htm and, for electronic format documents, subject to Terms and Conditions for Electronic Documents at www.sgs.com/terms_e-document.htm. Attention is drawn to the limitation of liability, indemnification and jurisdiction issues defined therein. Any holder of this document is advised that information contained hereon reflects the Company's findings at the time of its intervention only and within the limits of Client's instructions, if any. The Company's sole responsibility is to its Client and this document does not exonerate parties to a transaction from exercising all their rights and obligations under the transaction documents. Any unauthorized alteration, forgery or falsification of the content or appearance of this document is unlawful and offenders may be prosecuted to the fullest extent of the law. Unless otherwise stated the results shown in this test report refer only to the sample(s) tested and such sample(s) are retained for 30 days only. This document cannot be reproduced except in full, without prior approval of the Company.

Test Result(s):

Sample Description : Translucent liquid

Test Item(s):	Unit	Method	Results	MDL	RoHS Limit
Cadmium(Cd)	mg/kg	With reference to IEC62321-5 :2013. Analysis was performed by ICP/AES	n.d.	2	100
Lead (Pb)	mg/kg	With reference to IEC62321-5 :2013. Analysis was performed by ICP/AES	n.d.	2	1000
Mercury (Hg)	mg/kg	With reference to IEC62321-4 :2013+A1:2017. Analysis was performed by ICP/AES	n.d.	2	1000
Hexavalent Chromium (Cr(VI))	mg/kg	With reference to IEC62321-7-2 :2017. Analysis was performed by UV/Vis Spectrometry	n.d.	8	1000
Sum of PBBs	mg/kg	With reference to IEC62321-6 :2015. Analysis was performed by GC/MS	n.d.	-	1000
Monobromobiphenyl	mg/kg		n.d.	5	-
Dibromobiphenyl	mg/kg		n.d.	5	-
Tribromobiphenyl	mg/kg		n.d.	5	-
Tetrabromobiphenyl	mg/kg		n.d.	5	-
Hexabromobiphenyl	mg/kg		n.d.	5	-
Pentabromobiphenyl	mg/kg		n.d.	5	-
Heptabromobiphenyl	mg/kg		n.d.	5	-
Octabromobiphenyl	mg/kg		n.d.	5	-
Nonabromobiphenyl	mg/kg		n.d.	5	-
Decabromobiphenyl	mg/kg		n.d.	5	-
Sum of PBDEs	mg/kg		n.d.	-	1000
Monobromodiphenyl ether	mg/kg		n.d.	5	-
Dibromodiphenyl ether	mg/kg		n.d.	5	-
Tribromodiphenyl ether	mg/kg		n.d.	5	-
Tetrabromodiphenyl ether	mg/kg		n.d.	5	-
Pentabromodiphenyl ether	mg/kg		n.d.	5	-
Hexabromodiphenyl ether	mg/kg		n.d.	5	-
Heptabromodiphenyl ether	mg/kg		n.d.	5	-
Octabromodiphenyl ether	mg/kg		n.d.	5	-
Nonabromodiphenyl ether	mg/kg	n.d.	5	-	
Decabromodiphenyl ether	mg/kg	n.d.	5	-	

Test Location: 3 Toh Tuck Link, #01-02, Singapore 596228

This document is issued by the Company under its General Conditions of Service accessible at www.sgs.com/terms_and_conditions.htm and, for electronic format documents, subject to Terms and Conditions for Electronic Documents at www.sgs.com/terms_e-document.htm. Attention is drawn to the limitation of liability, indemnification and jurisdiction issues defined therein. Any holder of this document is advised that information contained hereon reflects the Company's findings at the time of its intervention only and within the limits of Client's instructions, if any. The Company's sole responsibility is to its Client and this document does not exonerate parties to a transaction from exercising all their rights and obligations under the transaction documents. Any unauthorized alteration, forgery or falsification of the content or appearance of this document is unlawful and offenders may be prosecuted to the fullest extent of the law. Unless otherwise stated the results shown in this test report refer only to the sample(s) tested and such sample(s) are retained for 30 days only. This document cannot be reproduced except in full, without prior approval of the Company.



Test Report

No: 10491966(1) A2

Date: 31-Mar-2020

Page 3 of 7

Test Result(s):

Sample Description : Translucent liquid

Test Item(s):	Unit	Method	Results	MDL	Limit
BBP (Benzyl butyl phthalate)	mg/kg	With reference to IEC 62321-8: 2017. Analysis was performed by GC/MS	n.d.	50	1000
DBP (Di-butyl phthalate)	mg/kg	With reference to IEC 62321-8: 2017. Analysis was performed by GC/MS	n.d.	50	1000
DEHP (Di-(2-ethylhexyl) phthalate)	mg/kg	With reference to IEC 62321-8: 2017. Analysis was performed by GC/MS	n.d.	50	1000
DIBP (Di-isobutyl Phthalate)	mg/kg	With reference to IEC 62321-8: 2017. Analysis was performed by GC/MS	n.d.	50	1000

Note:

- (1) mg/kg = ppm ; 0.1wt% = 1000ppm
- (2) n.d.= Not Detected
- (3) MDL = Method Detection Limit
- (4) "-" = Not regulated
- (5) * : Exceeds limit
- (6) Reference information: The limits of Benzyl butyl phthalate (BBP), Di-butyl phthalate (DBP), Di-(2-ethylhexyl) phthalate (DEHP), Di-isobutyl phthalate (DIBP) as set by G/TBT/N/EU/256 of WTO/TBT .

Remarks: Sample received was totally dissolved by preconditioning method.

Lab Analyst(s): AQ, Pheng and SJ

Test Location: 3 Toh Tuck Link, #01-02, Singapore 596228

This document is issued by the Company under its General Conditions of Service accessible at www.sgs.com/terms_and_conditions.htm and, for electronic format documents, subject to Terms and Conditions for Electronic Documents at www.sgs.com/terms_e-document.htm. Attention is drawn to the limitation of liability, indemnification and jurisdiction issues defined therein. Any holder of this document is advised that information contained hereon reflects the Company's findings at the time of its intervention only and within the limits of Client's instructions, if any. The Company's sole responsibility is to its Client and this document does not exonerate parties to a transaction from exercising all their rights and obligations under the transaction documents. Any unauthorized alteration, forgery or falsification of the content or appearance of this document is unlawful and offenders may be prosecuted to the fullest extent of the law. Unless otherwise stated the results shown in this test report refer only to the sample(s) tested and such sample(s) are retained for 30 days only. This document cannot be reproduced except in full, without prior approval of the Company.

SGS Testing & Control Services Singapore Pte Ltd

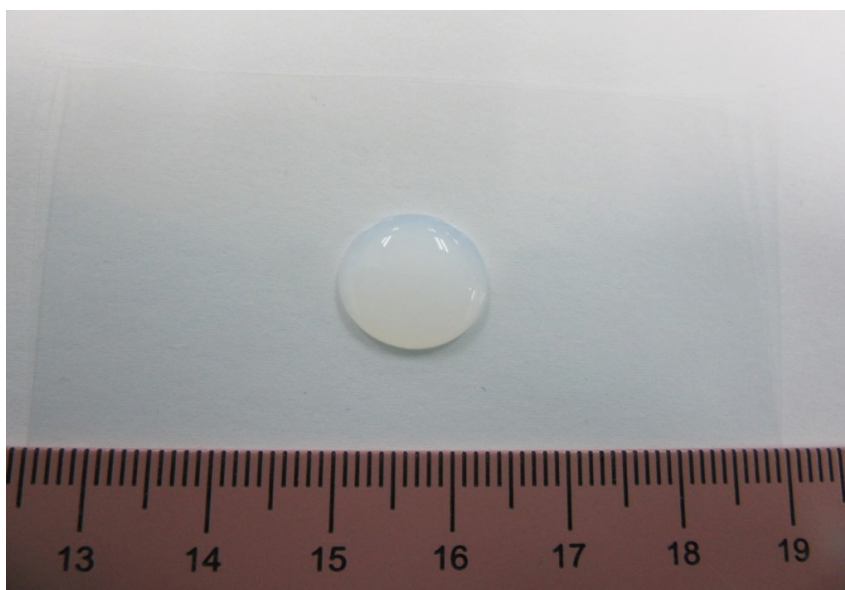
3 Toh Tuck Link, #01-02/03, Singapore 596228 t +65 6379 0111 f+65 6777 2914 www.sgs.com

Member of SGS Group

Sample photo:

Sample Description : Translucent liquid

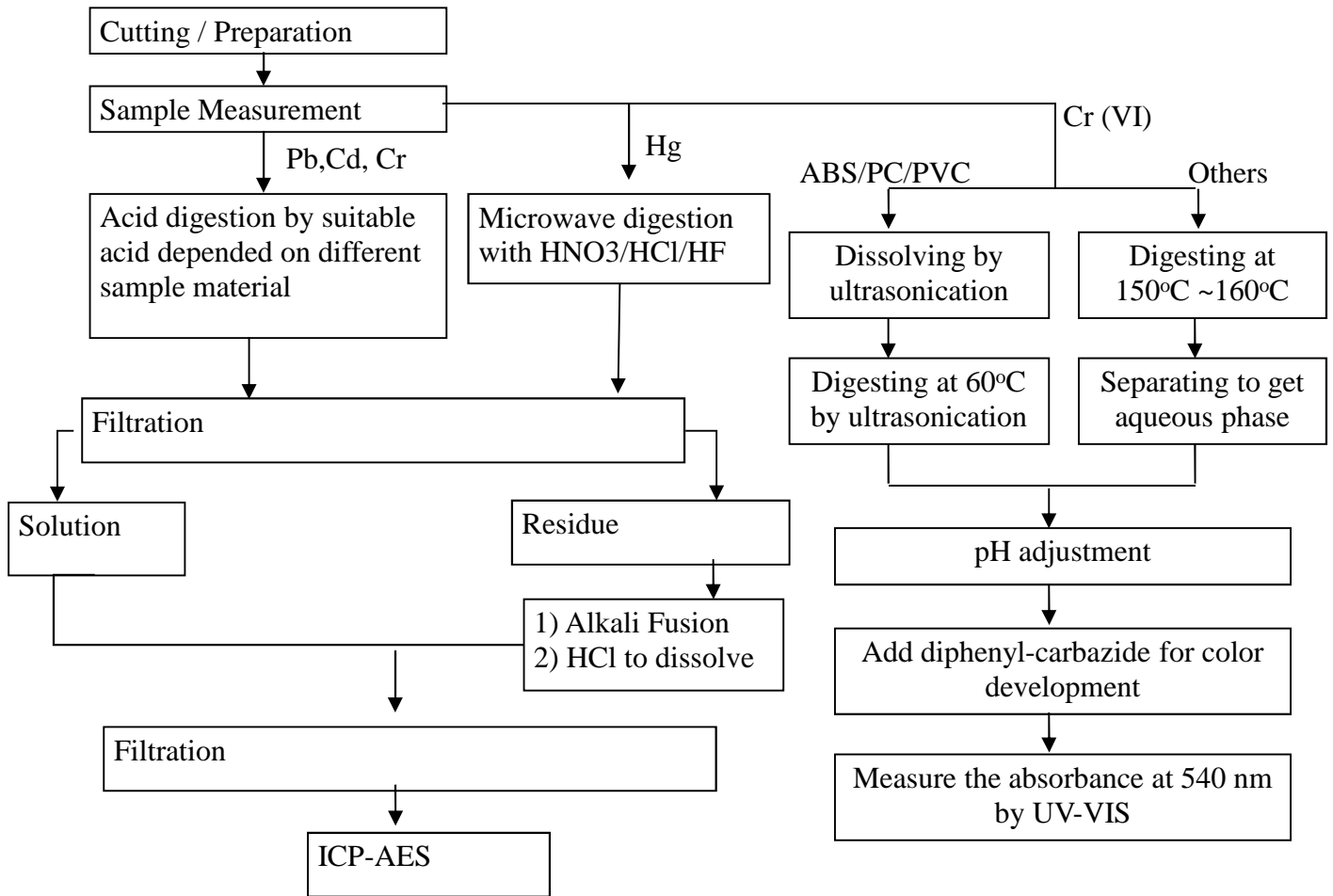
SGS authenticate the photo on original report only



Test Location: 3 Toh Tuck Link, #01-02, Singapore 596228

This document is issued by the Company under its General Conditions of Service accessible at www.sgs.com/terms_and_conditions.htm and, for electronic format documents, subject to Terms and Conditions for Electronic Documents at www.sgs.com/terms_e-document.htm. Attention is drawn to the limitation of liability, indemnification and jurisdiction issues defined therein. Any holder of this document is advised that information contained hereon reflects the Company's findings at the time of its intervention only and within the limits of Client's instructions, if any. The Company's sole responsibility is to its Client and this document does not exonerate parties to a transaction from exercising all their rights and obligations under the transaction documents. Any unauthorized alteration, forgery or falsification of the content or appearance of this document is unlawful and offenders may be prosecuted to the fullest extent of the law. Unless otherwise stated the results shown in this test report refer only to the sample(s) tested and such sample(s) are retained for 30 days only. This document cannot be reproduced except in full, without prior approval of the Company.

Process Flow of IEC 62321 (Pb, Cd, Hg, Cr & Cr(VI))



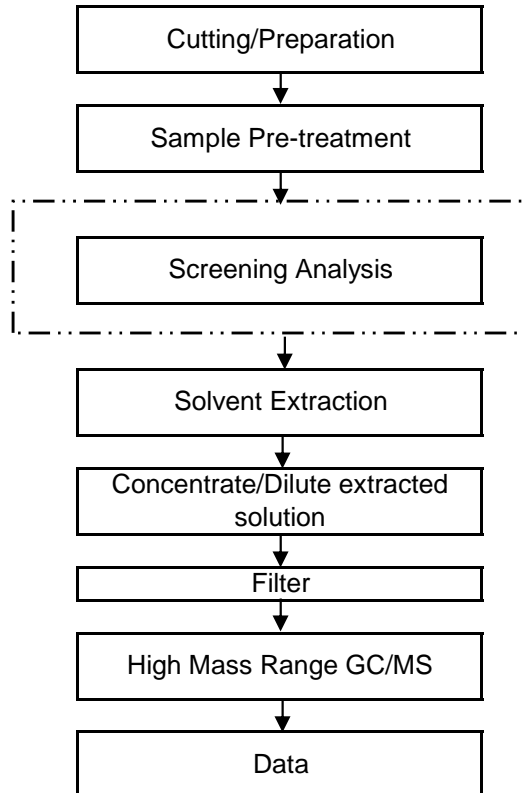
Remarks: Sample received was totally dissolved by preconditioning method. (CrVI method excluded)

Test Location: 3 Toh Tuck Link, #01-02, Singapore 596228

This document is issued by the Company under its General Conditions of Service accessible at www.sgs.com/terms_and_conditions.htm and, for electronic format documents, subject to Terms and Conditions for Electronic Documents at www.sgs.com/terms_e-document.htm. Attention is drawn to the limitation of liability, indemnification and jurisdiction issues defined therein. Any holder of this document is advised that information contained hereon reflects the Company's findings at the time of its intervention only and within the limits of Client's instructions, if any. The Company's sole responsibility is to its Client and this document does not exonerate parties to a transaction from exercising all their rights and obligations under the transaction documents. Any unauthorized alteration, forgery or falsification of the content or appearance of this document is unlawful and offenders may be prosecuted to the fullest extent of the law. Unless otherwise stated the results shown in this test report refer only to the sample(s) tested and such sample(s) are retained for 30 days only. This document cannot be reproduced except in full, without prior approval of the Company.

Process Flow of PBBs and PBDEs by GC/MS (IEC 62321)

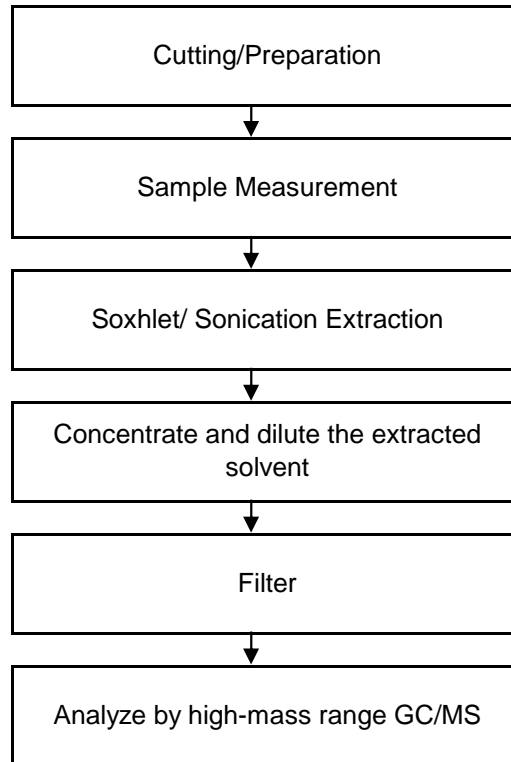
First Testing Process → Optional screen process Confirmation process ...→



Test Location: 3 Toh Tuck Link, #01-02, Singapore 596228

This document is issued by the Company under its General Conditions of Service accessible at www.sgs.com/terms_and_conditions.htm and, for electronic format documents, subject to Terms and Conditions for Electronic Documents at www.sgs.com/terms_e-document.htm. Attention is drawn to the limitation of liability, indemnification and jurisdiction issues defined therein. Any holder of this document is advised that information contained hereon reflects the Company's findings at the time of its intervention only and within the limits of Client's instructions, if any. The Company's sole responsibility is to its Client and this document does not exonerate parties to a transaction from exercising all their rights and obligations under the transaction documents. Any unauthorized alteration, forgery or falsification of the content or appearance of this document is unlawful and offenders may be prosecuted to the fullest extent of the law. Unless otherwise stated the results shown in this test report refer only to the sample(s) tested and such sample(s) are retained for 30 days only. This document cannot be reproduced except in full, without prior approval of the Company.

Process Flow of Phthalate by GC/MS (IEC 62321)



End of Report

Test Location: 3 Toh Tuck Link, #01-02, Singapore 596228

This document is issued by the Company under its General Conditions of Service accessible at www.sgs.com/terms_and_conditions.htm and, for electronic format documents, subject to Terms and Conditions for Electronic Documents at www.sgs.com/terms_e-document.htm. Attention is drawn to the limitation of liability, indemnification and jurisdiction issues defined therein. Any holder of this document is advised that information contained hereon reflects the Company's findings at the time of its intervention only and within the limits of Client's instructions, if any. The Company's sole responsibility is to its Client and this document does not exonerate parties to a transaction from exercising all their rights and obligations under the transaction documents. Any unauthorized alteration, forgery or falsification of the content or appearance of this document is unlawful and offenders may be prosecuted to the fullest extent of the law. Unless otherwise stated the results shown in this test report refer only to the sample(s) tested and such sample(s) are retained for 30 days only. This document cannot be reproduced except in full, without prior approval of the Company.